

UPG Sealed Lead-Acid Battery

STAY POWERED®

Absorbant Glass Mat (AGM) technology for superior performance. Valve regulated, spill proof construction allows safe operation in any position. Approved for transport by air. D.O.T., I.A.T.A., F.A.A. and C.A.B. certified. U.L. recognized under file number MH 20567.

UPG No. 45969

UB62000

Maintenance-Free

Specification

Nominal Voltage	6 volts		
Nominal Capacity	77 F°(25 C)		
20-hr (10.0A)	200 Ah		
10-hr (18.6A)	186 Ah		
5-hr (34.0A)	170 Ah		
1-hr (120A)	120 Ah		
Approximate Weight	60.62 lbs (27.5 kgs)		
Internal Resistance (approx.)	2.2 mΩ		
Shelf Life (% of normal capacity at 68° F (20° C)			
3 Months	6 Months	12 Months	
91%	83%	64%	
Temperature Dependency of Capacity	(20 hour rate)		
104° F (40°C)	77° F (25°C)	32° F (0°C)	5° F (-15°C)
102%	100%	85%	65%
AGM Operational Temperature			
Charge	32°F to 104°F (0°C to 40°C)		
Discharge	5°F to 113°F (-15°C to 45°C)		
AGM Storage Temperature	5°F to 104°F (-15°C to 40°C)		



Due to continuous improvements to our products, product may vary slightly from depiction.

Charge Method (Constant Voltage)

Cycle Use (Repeating Use)

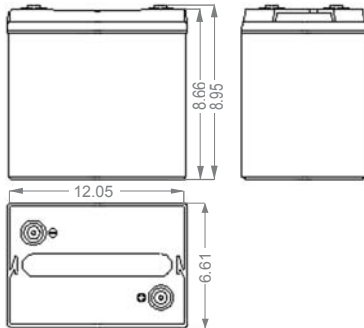
Initial Current 60A or smaller

Control Voltage 7.3 - 7.4 V

Float Use

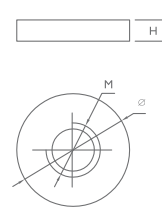
Control Voltage 6.8 - 6.9 V

Physical Dimensions: in (mm)



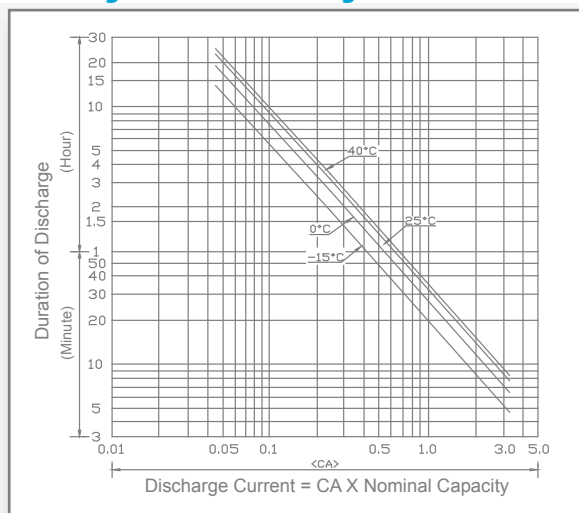
L: 12.05 in (306 mm)
W: 6.61 in (168 mm)
H: 8.66 in (220 mm)
TH: 8.95 in (227 mm)
 Tolerances are +/- 0.04 in. (+/- 1mm) and +/- 0.08 in. (+/- 2mm) for height dimensions. All data subject to change without notice.

Terminals

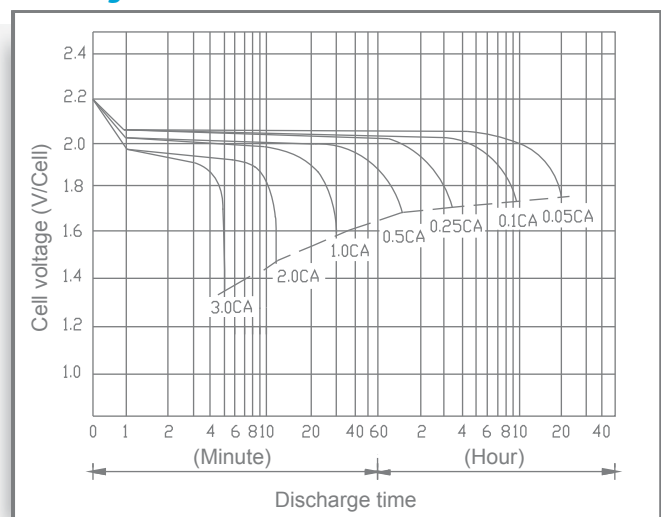


Dimension Type	M	Ø	H
I 4	6.00 mm 0.24 in	15.0 mm 0.59 in	4.00 mm 0.16 in

Discharge Time vs. Discharge Current



Discharge Characteristics



www.upgi.com

UPG is ISO 9001 Certified

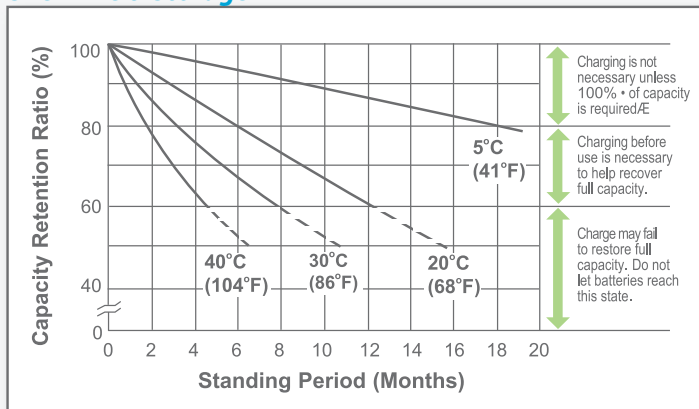
All specifications are subject to change without notice.

488 S. Royal Lane | Coppell, Texas 75019 | P 469.892.1122 | T 866.892.1122 | F 469.892.1123 | sales@upgi.com

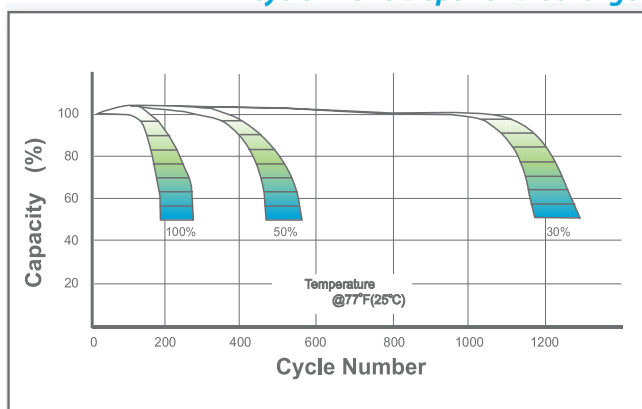
Copyright© 2019 Universal Power Group Inc. All rights reserved.

D1926-1

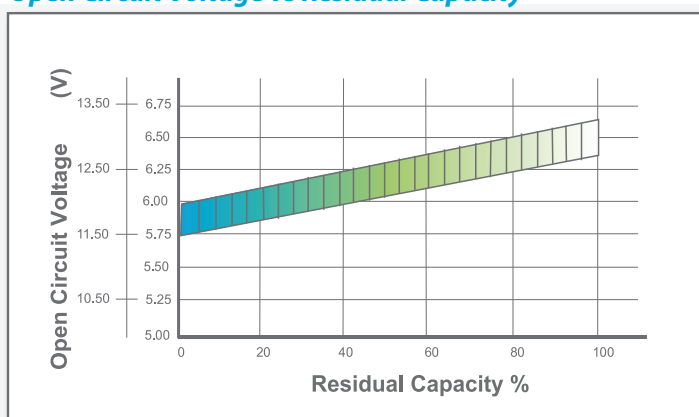
Shelf Life & Storage



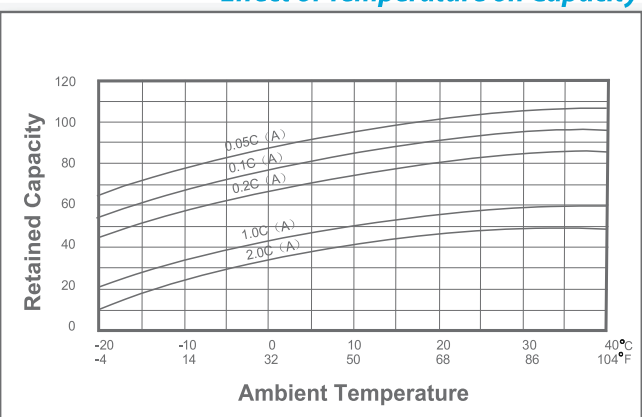
Cycle Life vs Depth of Discharge



Open Circuit Voltage vs Residual Capacity



Effect of Temperature on Capacity



Charge Current & Final Discharge Voltage

Application	Charge Voltage (V/Cell)			Max. Charge Current	Final Discharge Voltage V/Cell	1.75	1.70	1.60	1.30
	Temperature	Set Point	Allowable Range						
Cycle Use	25°C (77°F)	2.45	2.40~2.50	0.30C	Discharge Current (A)	0.2C > (A)	0.2C < (A) < 0.5C	0.5C < (A) < 1.0C	(A) > 1.0C
Standby	25°C (77°F)	2.30	2.27~2.30						